

Table of Contents

Chapter 1. Introduction	3
How to Use This Guide	6
Unpack.....	7
Chapter 2. Getting Started	8
Function Keys	9
LCD Display.....	11
Insert a Battery.....	12
Battery Consuming Reference.....	13
Hold Switch	14
Chapter 3. Basic Usage	15
Connecting the MP3/Storage Drive to Your Computer	16
Hardware Installation for Windows 98SE only.....	17
Utility Installation	20
Firmware update	24
Power On and Off.....	27
Editing Sound Tracks (Files)	28
Music Playback	30
Normal Playback	30
Select the Next or Previous Track (File)	30
Fast-Forward or Rewind	31
Volume Adjusting	31
Delete a Track (File)	31
Delete All Tracks (Files).....	32
EQ Settings	34
Repeat Settings.....	35
FM Radio Mode.....	36



Select FM Radio Mode	36
Select FM Station	37
Storing a Favorite Station.....	37
Selecting the Stored Favorite Station	38
Recording Radio Broadcast	38
Play a Recorded FM Voice File.....	39
Delete a Recorded FM Voice File	40
Delete All FM Voice Files	41
Switch between Music Playback or FM mode	42
Switch from Music Playback mode to FM mode.....	42
Switch from FM mode to Music Playback mode.....	42
Voice Recording	43
Voice Recording	43
Play a Recorded Voice File.....	45
Delete a Recorded Voice File.....	46
Delete All Voice Files	47
Language Learning Function	48
Menu Mode.....	49
Other Settings.....	54
Backlight.....	54
Contrast	55
Power Off	56
Record Rate	58
Language	59
USB Flash Disk	60
Appendix A. Specifications	61

Chapter 1. Introduction

Congratulations on becoming a new user of **Acer Multi-functional MP3/Storage Drive**, the finely designed portable digital audio player. Your new **Acer Multi-functional MP3/Storage Drive** will improve the convenience of storing your personal data and the enjoyment of using various audio functions. We are proud to tell our users that **Acer Multi-functional MP3/Storage Drive** is thoroughly tested and backed by our reputation for unsurpassed dependability and customer satisfaction.

Acer Multi-functional MP3/Storage Drive is a high performance portable digital audio player that enables users to play MP3 or WMA audio files, listen in to the **FM** radio broadcast, and have favorable program recorded in **Acer Multi-functional MP3/Storage Drive**'s memory. In addition to the functions that just now mentioned, **Acer Multi-functional MP3/Storage Drive** also works as a portable USB data-storing device that enables users to store their personal data in the memory of **Acer Multi-functional MP3/Storage Drive**. Here are the five main distinguishing features of **Acer Multi-functional MP3/Storage Drive**:

- **Audio Player** –supports MP3 and WMA audio files.
- **FM Radio Broadcasting** – provides the function of receiving **FM** Radio frequency. Users are able to save ten **FM** station memory and have the **FM** program recorded while listening to the radio.
- **Voice or Radio Program Recording** – provides synchronous recording function for voice or **FM** radio program.
- **Language Learning Function** – enables users to listen to a particular limited playback repeatedly during normal playback. With this function, users will be able to pay more concentration on the repeated playback and to achieve the result of learning language.

- **USB Flash Disk** – allows users to store personal data in **Acer Multi-functional MP3/Storage Drive**'s memory.

Thank you for choosing **Acer Multi-functional MP3/Storage Drive**. We hope you will continue to turn to us for additional quality products as your personal needs and interests grow.

How to Use This Guide

This User's Guide provides instructions and illustrations on how to install and operate your **Acer Multi-functional MP3/Storage Drive**. We assume that those users whose operation system is Windows 98SE are familiar with their OS, and be capable to follow the step by step instructions to install the driver of **Acer Multi-functional MP3/Storage Drive**. If users who are not able manage the operation system properly, it is suggested to learn more about Microsoft Windows by referring to your Microsoft Windows manual before installing the provided driver.

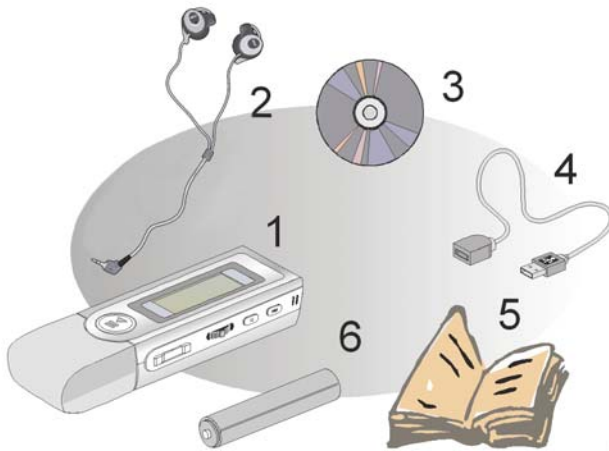
Chapter 1, Introduction, tells you the descriptions of all the accessories of **Acer Multi-functional MP3/Storage Drive**. Please check out that if you have all the accessories included when you open the packing box. If any item is damaged or missing, please contact the vendor where you purchased **Acer Multi-functional MP3/Storage Drive** directly.

Chapter 2, Getting Started, introduces the function keys on the Drive, and tells you how to insert an AAA battery into the battery container located on the back of the Drive.

Chapter 3, Basic Usage, describes how to use your new MP3/Storage Drive in a various way. It is recommended to read this chapter carefully before using this MP3/Storage Drive.

Appendix A, Specification, provides the specification of this MP3/Storage Drive.

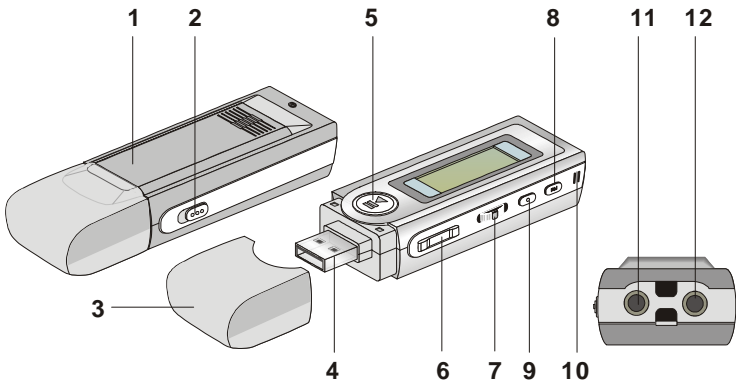
Unpack



1. Multi-Functional MP3/Storage Drive
2. Earphone
3. Driver Disk
4. USB Cable
5. Quick Guide
6. AAA Battery

Chapter 2. Getting Started

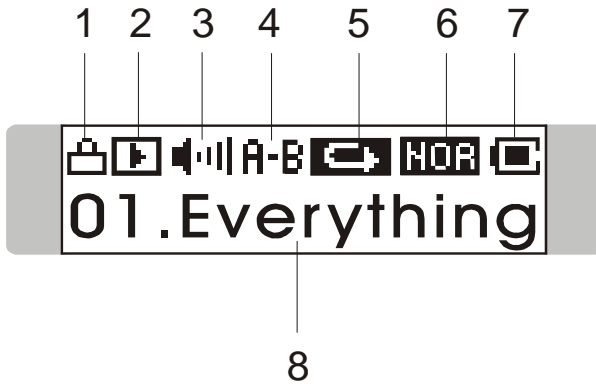
Function Keys



1. Battery Slide open to insert an AAA size battery here.
2. Hold Switch Switch to hold position to prevent any miss touching while this MP3/Storage Drive is recording or playing.
3. USB Connector Cap Remove the cap when connecting the MP3/Storage Drive to the computer.
4. USB Connector Connect one end of the supplied USB cable.
5. Play/Pause In music playback/Voice mode, press to play or pause the playback; in FM mode, press to select the stored favorite stations one by one.
6. Volume+/- Press +/- button to increase or decrease the volume level.

7. MENU Press down the button or push it to the right or to the left to make various adjustment.
8. Fn Press to select FM station mode.
9. REC Press to start or stop the FM or voice recording.
10. MIC Microphone
11. Earphone Jack Plug the supplied earphone here.
12. Line-in Jack Accepts input from external microphones, or other audio line-in devices (e.g audio CD players, stereo walkman and etc.).

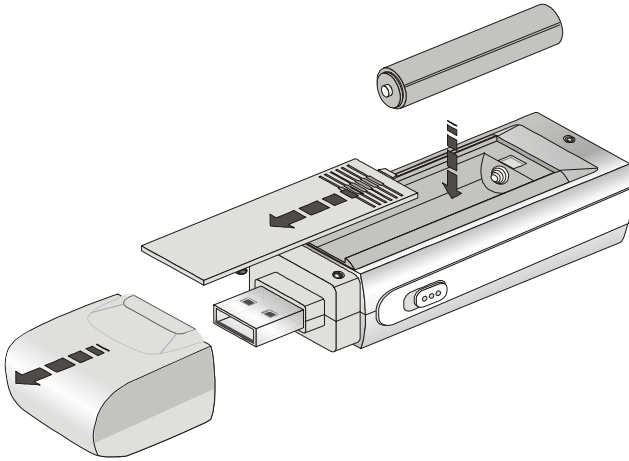
LCD Display





1. Hold (Lock) Switch Indicates when the Hold function is enabled.
2. Playback Status Displays the music or voice files playback status.
3. Volume Displays the volume status.
4. A to B Repeat Indicates when A to B Repeat function is enabled.
5. Repeat Mode Indicates play mode that includes Normal, Repeat One, Repeat All, Shuffle, and Shuffle Repeat.
6. Equalizer Indicates the EQ mode settings, which include Normal, Classical, POP, Rock, and Jazz.
7. Battery Status Indicates the Battery Status.
8. Playing File Name Displays the current file name that is being played.

Insert a Battery

1. Remove the USB connector cap
2. Slide open the battery cover.



3. Insert an AAA battery and make sure the battery is inserted into the correct alignment.
4. Slide back the battery cover.
5. Press the **Play/Pause**   button to check the capacity of the battery.

Battery Status



6. If you cannot read the Battery Status on the Display when the battery is inserted, please return to step 1 and once again make sure the battery is inserted into the correct alignment.

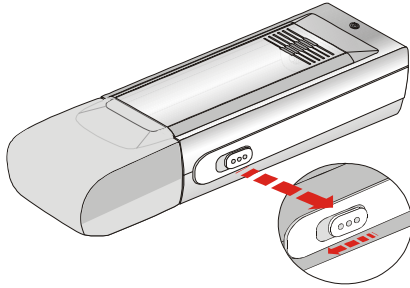
Battery Consuming Reference

Category of Battery	Recording	Playing
AAA Alkaline 1280mA/hr battery	Max 16 hours for voice or FM radio recording	Max 16 hours for audio playback

- Note:**
1. Alkaline battery is recommended when using this Drive.
 2. Make sure the battery is taken out if you are not going to use this drive for a long period of time.

Hold Switch

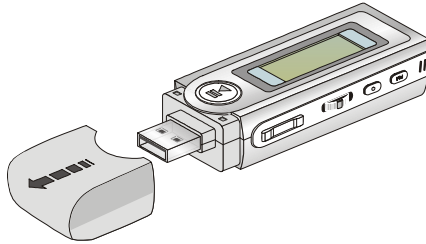
This MP3/Storage Drive provides a Hold Switch, which is located on the side of the Drive for preventing any miss touching while the Drive is recording or playing. Once the hold switch is slide to the lock position, all function keys on the Drive will be disabled instantly.



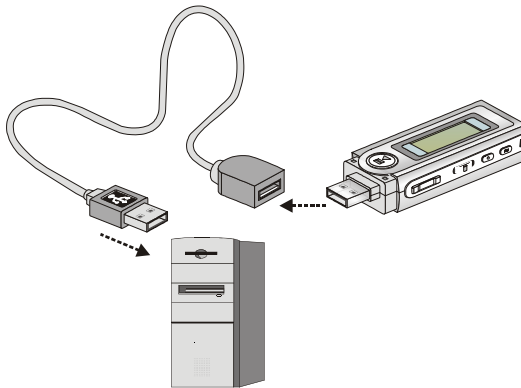
Chapter 3. Basic Usage

Connecting the MP3/Storage Drive to Your Computer

1. Remove the USB connector cap.



2. Plug one end of the supplied USB cable to your computer, and plug the other end to the MP3/Storage Drive.



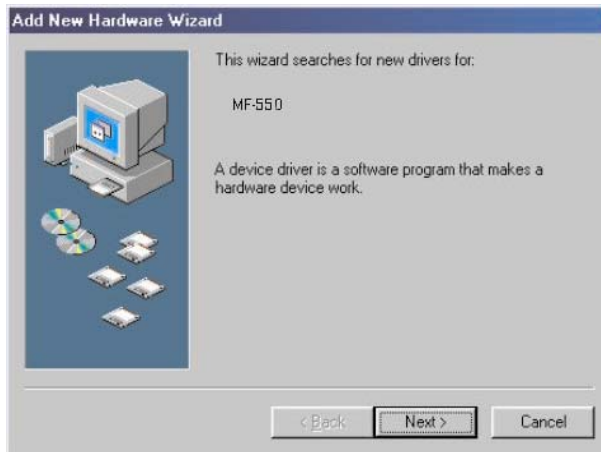
3. And the MP3/Storage Drive should be detected by the operation system automatically.

Note: *If the operation system of your computer is Windows 98SE, a hardware driver for the MP3/Storage Drive will be required.*

Hardware Installation for Windows 98SE only

For Windows 98SE operation system, it will automatically detect the new hardware when the MP3/Storage Drive is first connected to your computer. Please follow the following instructions to install the driver for this MP3/Storage Drive.

1. Click **Next** to continue.



2. Select **Search for the best driver for your device** to continue.



3. Insert the provided disk, and select **CD-ROM** to continue.



4. Click **Next** to continue.



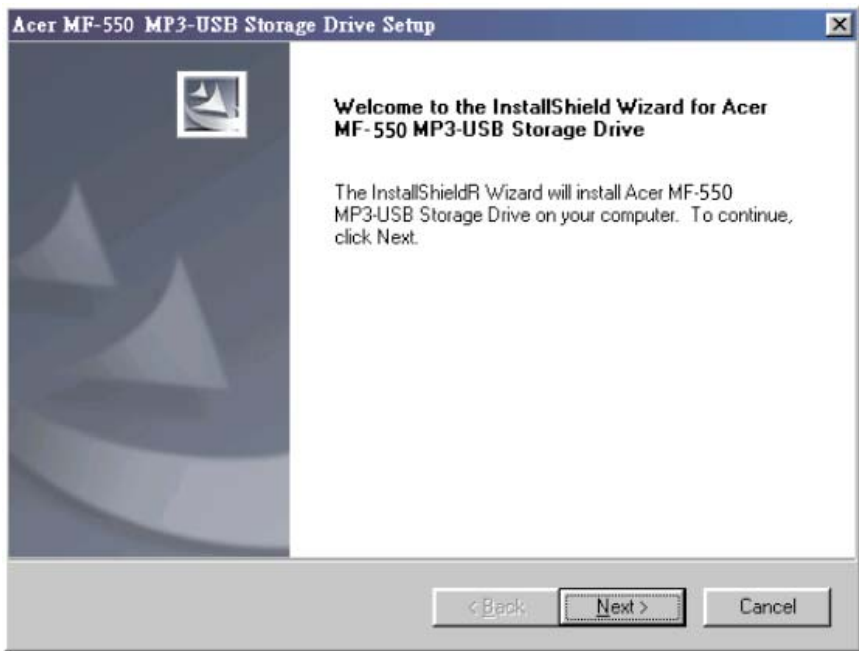
5. Click **Finish**, and the driver is installed successful.



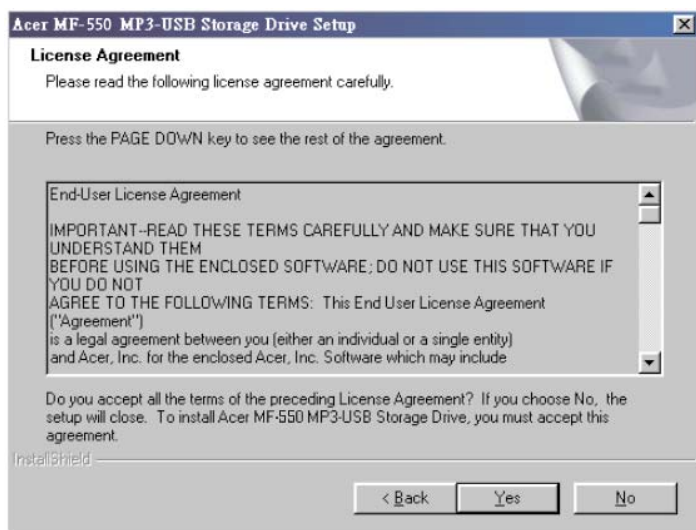
Utility Installation

The **Acer Multi-functional MP3/Storage Drive** provides a useful utility for upgrading the latest firmware provided by Acer via the Internet. To install this utility, simply insert the supplied disc into the computer, then follow the on-screen instructions.

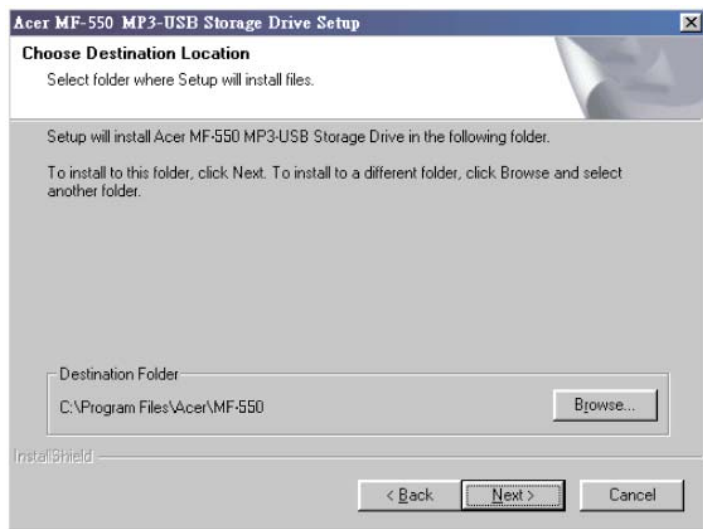
1. Click **Next** to continue.



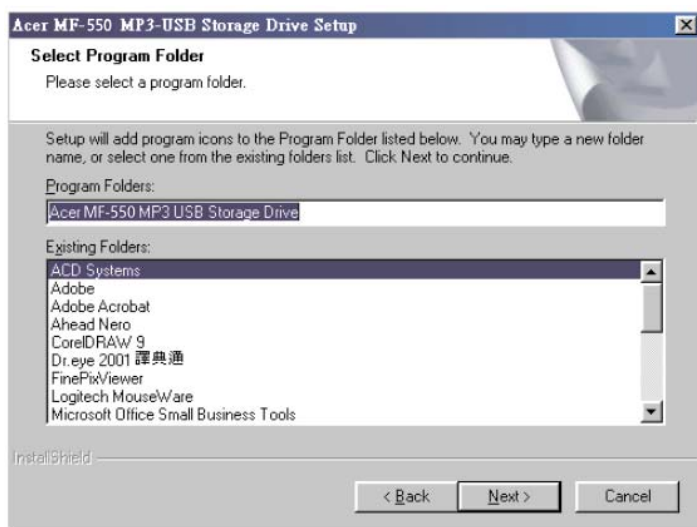
2. Click **Yes** to continue.



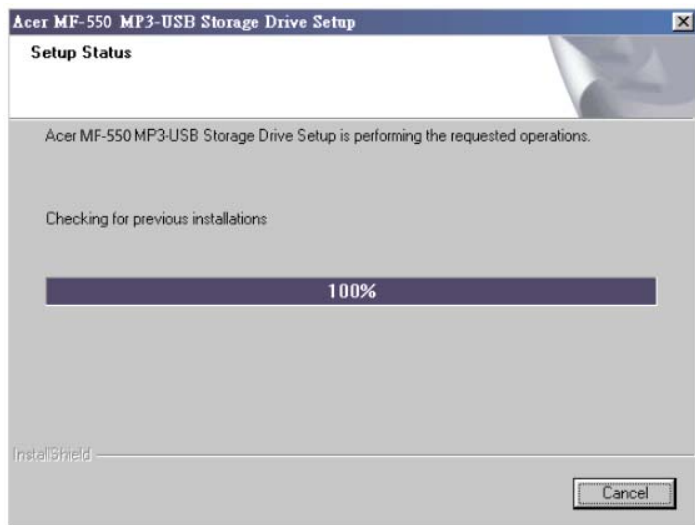
3. Click **Next** to continue.



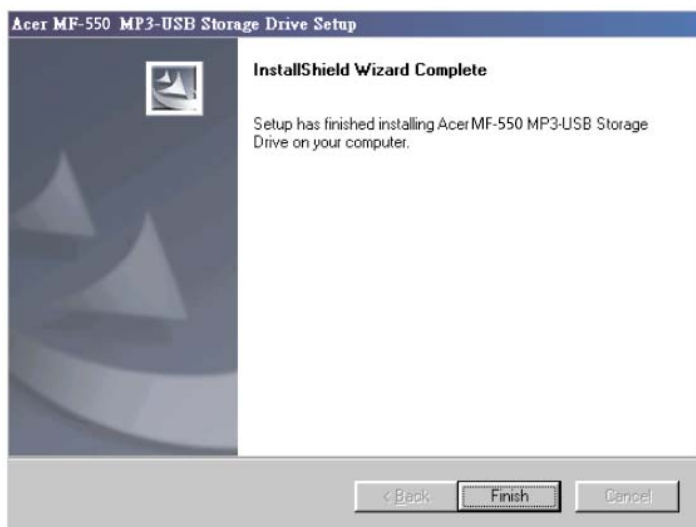
4. Click **Next** to continue.



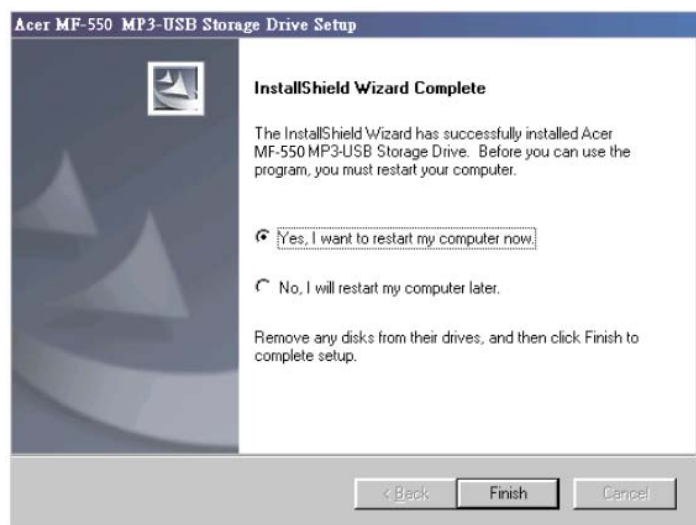
5. Installation is on going.



6. Click **Finish** to continue.

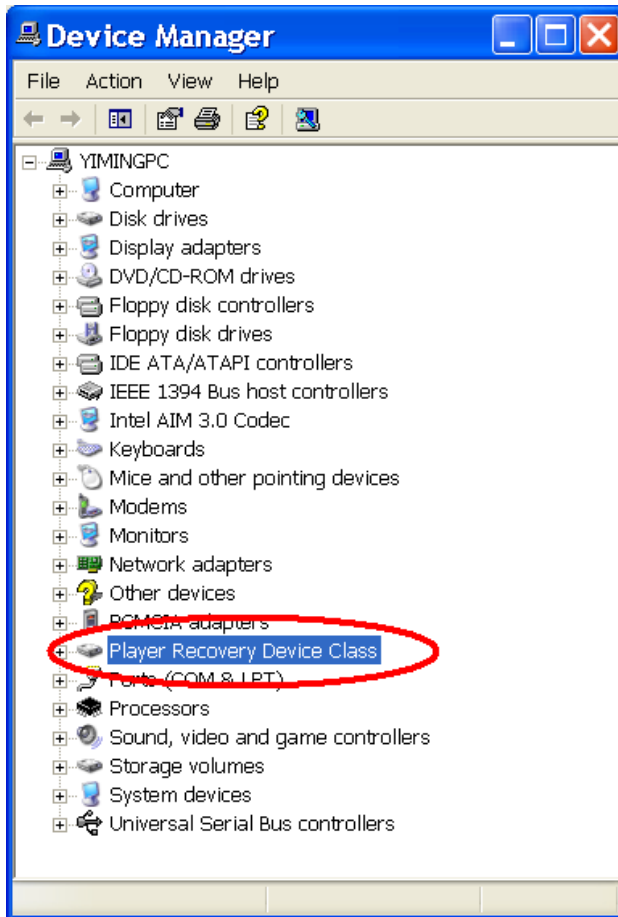


7. Select **Yes, I want to restart my computer now.**

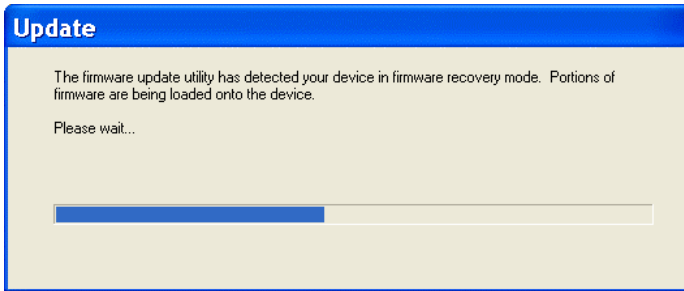


Firmware update

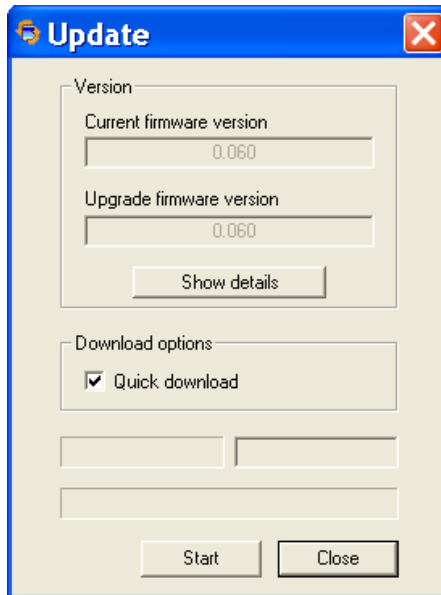
1. Hold down the play button and **do NOT release** and then connect the drive to the host machine via the USB cable.
2. The drive will enter recovery mode.
3. A new drive called ***Player Recovery Device Class*** will appear in the Device Manager.



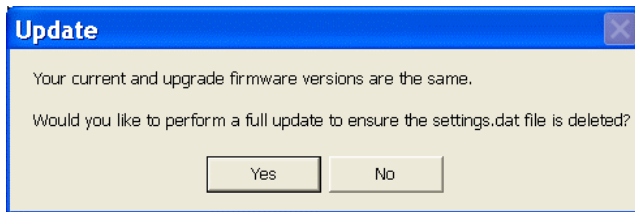
4. Release the play button.
5. Run the **Update** program from the *Start* menu (*Start -> Programs -> Acer MF-550 MP3 USB Storage Drive -> Update*). This will load the firmware to update.




6. After loading firmware, you will see an update dialog.

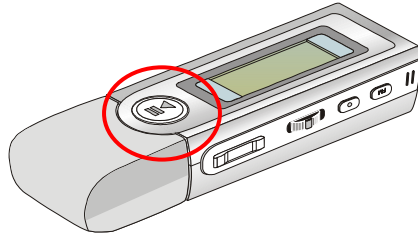



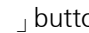
7. If you choose quick download, it will format the MP3 drive first then download the firmware, otherwise it will download the firmware only.
8. Press the Start button to start the download.
9. If you delete the *settings.dat*, all of your MP3 player settings will be cleared.

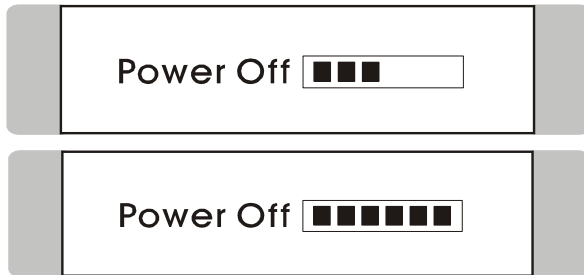


Power On and Off


1. Press the **Play/Pause**  button once to turn the power on.




2. To power off the USB Device, press and hold the **Play/Pause**  button until the power is switched off. While you are long pressing the **Play/Pause**  button to power off the MP3/Storage Drive, you will see a **Power Off Status Bar** appearing on the Display to show you the Power Off status, and note that it takes about three to five seconds to turn the power off.



Editing Sound Tracks (Files)

1. Press the **Play/Pause**  button to power on the MP3/Storage Drive. If there is no sound track added in the memory of this drive, you will read the message as below on the screen.



2. Remove the USB connector cap, and then plug one end of the supplied USB cable to your computer, and plug the other end to the MP3/Storage Drive.
3. Once the MP3/Storage Drive is connected to the computer, press the **Play/Pause**  button to start connection. You will see the screen shown as below.



4. Go to **Start** → **Program** → **Windows Explore** → **MP3/Storage Drive**.
5. Select the desired sound tracks (files) from your own folder, and move them into the MP3/Storage Drive. While the selected sound tracks (files) is transferring to the MP3/Storage Drive, a message will shown as below.



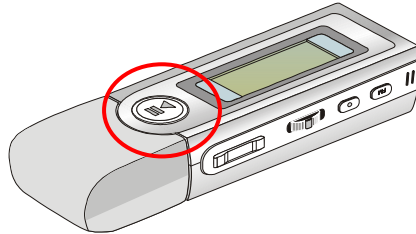
***Note:** Do not disconnect the MP3/Storage Drive from the computer while the file transferring is still on going, otherwise it may cause some system failure.*

6. Under the MP3/Storage Drive, you are allowed to add, delete, or edit a folder as what you will do under a disk as usual. In another word, this MP3/Storage Drive works as another portable hard disk of yours.

Music Playback

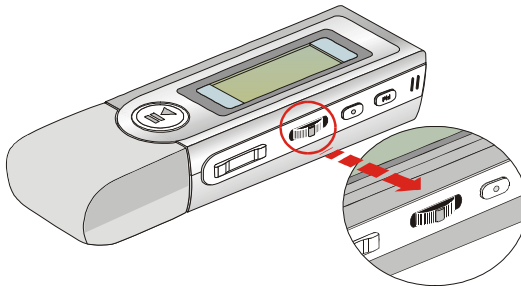
Normal Playback

1. Press the **Play/Pause** ⏪ ▶ || ⏩ button to play the current selected file.
2. During playback, press the **Play/Pause** ⏪ ▶ || ⏩ button again to pause the playback.



Select the Next or Previous Track (File)

1. During playback, push the **Menu** button to the right once to skip to the next track.



2. Or, push the **Menu** button to the left once to skip back to the previous track.



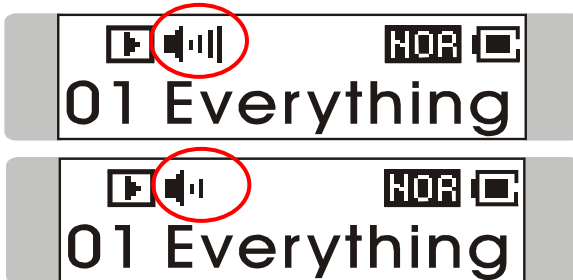


Fast-Forward or Rewind

1. During playback, push the **Menu** button to the right and hold the position to fast-forward the current track.
2. Or, push the **Menu** button to the left and hold the position to rewind the current track.

Volume Adjusting

1. Press the **Volume Up** or **Down** button to adjust the playback volume up or down.
2. You may check the LCD Display to see the Volume status.



Delete a Track (File)

1. Press down the **Menu** button once, and then push the **Menu** button to the right four times, and now you should read the message of DELETE FILE appearing on the Display.



2. Press down the **Menu** button once and then push the **Menu** button to select DEL MUSIC.



3. All of the stored file will be displayed by sequence, switch the **Menu** button to the right or to the left to select Yes to delete the file shown on the Display, or select No to skip to the next file, or select EXIT to leave the current screen.



Delete All Tracks (Files)

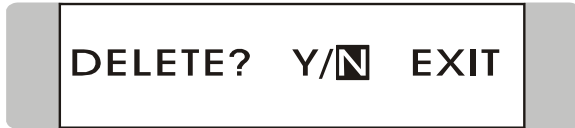
1. Press down the **Menu** button once, and then push the **Menu** button to the right four times, and now you should read the message of DELETE FILE appearing on the Display.



2. Press down the **Menu** button once and then push the **Menu** button to the right twice to select DEL ALL MUSIC.



3. Once you read DEL ALL MUSIC on the screen, press down the **Menu** button, and then select **Y** to delete all music files. Note that it may take several seconds to delete all the files.



EQ Settings

While you are listening to the music, you are allowed to choose a desired EQ mode to meet your personal need or habit.

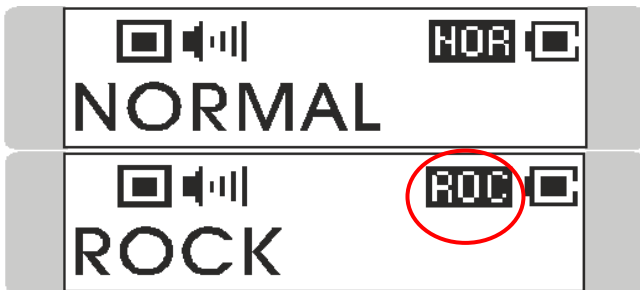
1. Press down the **Menu** button once, and then push the **Menu** button to the right three times, and now you should read the message of SETTINGS appearing on the Display.



2. Press down the **Menu** button once and you should read the message of EQ appearing on the Display.



3. Press down the **Menu** button once, and switch the **Menu** button to the right or to the left to choose the EQ mode between NORMAL, ROCK, JAZZ, CLASSICAL, and POP. The default EQ setting is NORMAL mode.
4. Once a particular EQ mode is selected, the indicator for each different EQ mode will appear on the top of the Display.



Repeat Settings

While you are playing music or voice files, you are allowed to select a desired playback setting from NORMAL, REPEAT ONE, REPEAT ALL, SHUFFLE, and SHUFFLE REP.

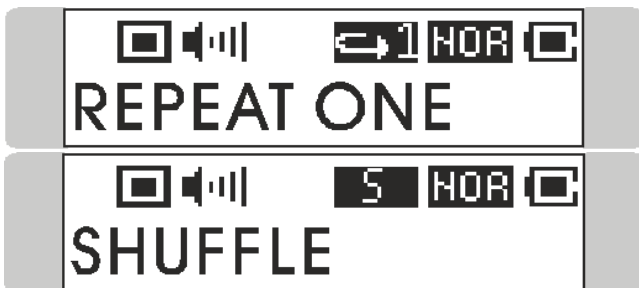
1. Press down the **Menu** button once, and then push the **Menu** button to the right three times, and now you should read the message of SETTINGS appearing on the Display.



2. Press down the **Menu** button once and you should read the message of REPEAT appearing on the Display.



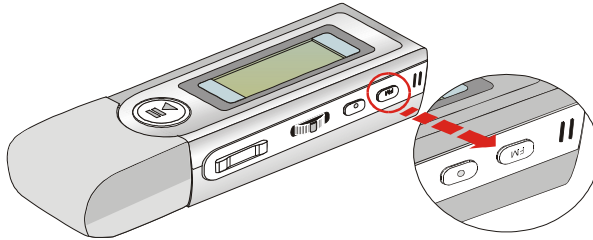
3. Press down the **Menu** button once, and switch the **Menu** button to the right or to the left to choose NORMAL, REPEAT ONE, REPEAT ALL, SHUFFLE, or SHUFFLE REP.



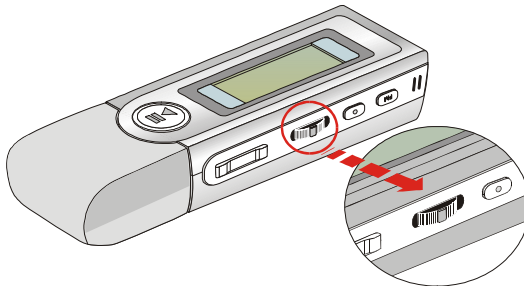
FM Radio Mode

Select FM Radio Mode

1. Press and hold the **Fn** button located on the side of the MP3/Storage Drive for one second to select FM Mode.



2. Or, you can press down the **Menu** button once, and then push the **Menu** button to the right twice.



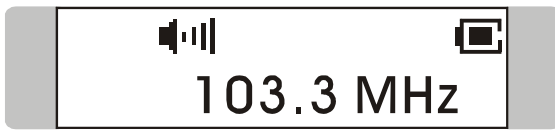
3. If you read the message of FM RADIO appearing on the Display, press down the **Menu** button once to select FM Radio Mode.



4. If you do not read the message of FM RADIO on the Display, please keep pushing the **Menu** button the to right until FM RADIO appears.

Select FM Station

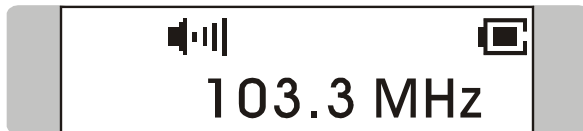
1. Once the FM Radio Mode is selected, use the **Menu** button by pushing it to the right or to the left to select the desired station.
2. While you are searching for the desired station, you will read the frequency appearing on the Display.



Storing a Favorite Station

With this favorite station memory function, you will be able to store 10 favorite stations named from P01 to P10 into the memory of this MP3/Storage Drive.

1. To store a favorite Station, select a desired frequency first.



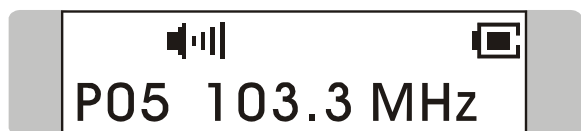
2. Press the **Menu** button once, and you should read the message of SAVE TO P01 appears on the Display.



3. Switch the **Menu** button to the right or to the left to select a desired favorite station number.



4. Now, press the **Menu** button again to save the selected frequency to the selected favorite station number.



5. To set another favorite station, repeat step 1 to 4.

Selecting the Stored Favorite Station

1. To select the stored favorite station, press the **▶ || ◀** button repeatedly.
2. Once the desired stored favorite station appears on the Display, release the **▶ || ◀** button.

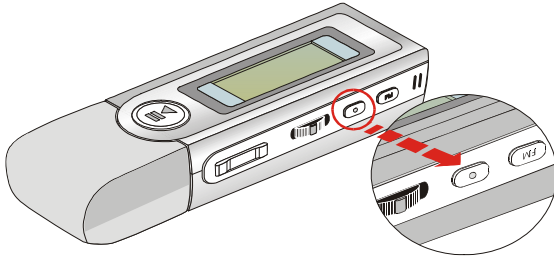


Recording Radio Broadcast

1. Select a desired station frequency.



2. Press and hold the **REC ▶ ● ◀** button located next to the **Fn** button for 2 seconds, and then release the **REC ▶ ● ◀** button.



3. Once the **REC** [] button is long pressed and then released, the selected station frequency will now start being recorded. On the Display, users should read that a recording FM file is generated and place under the folder of [**VOICE/**]. The recording file name sequence starts from [**F001.WAV**], and then [**F002.WAV**], and so forth.



4. To stop recording, press the **REC** [] button or the **Menu** button again.
5. The maximum length of the recording depends on how much available memory space is left while recording.

Play a Recorded FM Voice File

1. To play a recorded FM voice file, press down the **Menu** button once, and then push the **Menu** button to the right once, and now you should read the message of **VOICE** appearing on the Display.



2. Press down the **Menu** button again, and then use the **Menu** button to select a desired recorded FM voice file by pushing the **Menu** button to the right or to the left.



3. Once the desired voice file is selected, press the 「▶||」 button to start playing the file.
4. Note that while you are searching for the desired recorded voice file, all the recorded FM voice files will be displayed by sequence.

Delete a Recorded FM Voice File

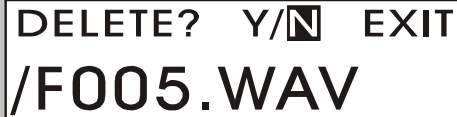
1. To delete a recorded FM voice File, press down the **Menu** button once, and then push the **Menu** button to the right four times, and now you should read the message of DELETE FILE appearing on the Display.



2. Press down the **Menu** button once and then push the **Menu** button to the right to select DEL VOICE.



3. All of the recorded FM voice file will be displayed by sequence. Switch the **Menu** button to the right or to the left to select **Y** to erase the file shown on the Display, or select **N** to skip to the next file, or select EXIT to leave the current screen.



DELETE? Y/N EXIT
/F005.WAV

Delete All FM Voice Files

1. Press down the **Menu** button once, and then push the **Menu** button to the right four times, and now you should read the message of DELETE FILE appearing on the Display.



DELETE FILE

2. Press down the **Menu** button once and then push the **Menu** button to the right twice to select DEL ALL VOICE.



DEL ALL VOICE

3. Once you read DEL ALL VOICE on the screen, press down the **Menu** button, and then select **Y** to delete all FM voice files. Note that it may take several seconds to delete all the files.

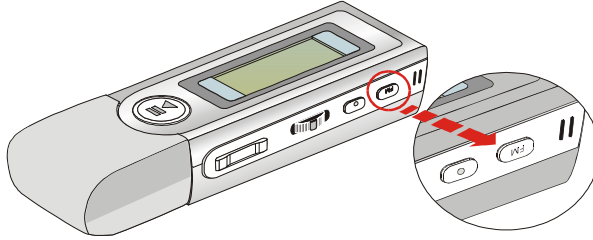


DELETE? Y/N EXIT

Switch between Music Playback or FM mode

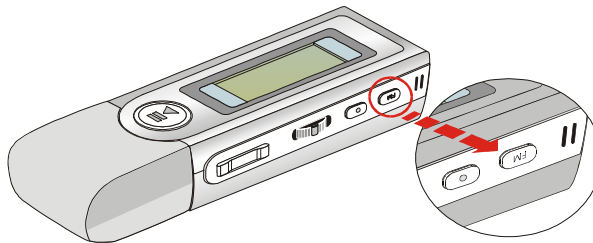
Switch from Music Playback mode to FM mode

Press and hold the **Fn** button located on the side of the MP3/Storage Drive for few seconds to select FM Mode.



Switch from FM mode to Music Playback mode

Please press Fn button for one second to leave FM mode, and back to Music playback mode again.



Voice Recording

This MP3/Storage Drive also works as a synchronizing recorder. You can setup Record Source to MICROPHONE or LINE-IN from SETTINGS and use it to record your own voice, an interview or a speech, and so on. To do the voice Recording, please follow the steps shown below.

Voice Recording

This MP3/Storage Drive provides two methods to proceed voice recording, follow the instruction below to learn these two methods.

Method I (When the record source is MICROPHONE)

1. Press the **REC** 「●」 button located next to the **Fn** button to start voice recording function.
2. On the Display, a recording file should be generated and placed under the folder of [/VOICE/]. The recording file name sequence starts from [V001.WAV], and then [V002.WAV], and so forth.



Note: When the record source is set to LINE-IN, the recording file name starts from [L001.WAV], and then [L002.WAV], and so forth.

3. To stop recording, simply press down the **REC** 「●」 button again, and you will see the status return to the previous status.

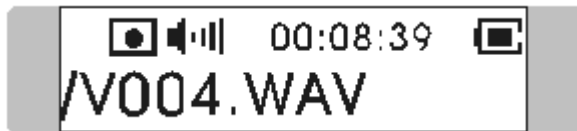
Method II (When the record source is MICROPHONE)

4. Press down the **Menu** button once, and then push the **Menu** button to the left twice.
5. If you read the message of **RECORD** appearing on the Display, press

down the **Menu** button again to start recording.



6. On the Display, users now should read that a recording file is generated and place under the folder of [/VOICE/]. The recording file name sequence starts from [V001.WAV], and then [V002.WAV], and so forth.

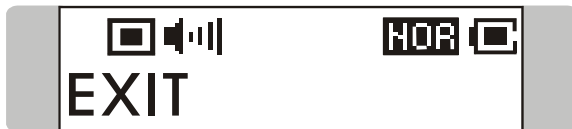


Note: When the record source is set to LINE-IN, the recording file name starts from [L001.WAV], and then [L002.WAV], and so forth.

7. To stop recording, simply press down the **Menu** button or the **REC** 「•」 button again, and you will see the message on the screen return to the previous status.



8. To exit the RECORD mode, push the **Menu** button to the right once to Exit, and then press the **Menu** button once.



Play a Recorded Voice File

1. To play a recorded voice file, press down the **Menu** button once, and then push the **Menu** button to the right once, and now you should read the message of VOICE appearing on the Display.



2. Press down the **Menu** button again, and then use the **Menu** button to select a desired recorded voice file by pushing the **Menu** button to the right or to the left.



3. Once the desired voice file is selected, press the 「▶||」 button to start playing the file.
4. Note that while you are searching for the desired recorded voice file, all the recorded voice files will be displayed by sequence.

Delete a Recorded Voice File

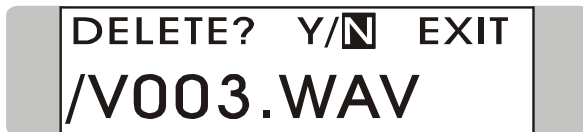
1. To delete a recorded voice File, press down the **Menu** button once, and then push the **Menu** button to the right four times, and now you should read the message of **DELETE FILE** appearing on the Display.



2. Press down the **Menu** button once and then push the **Menu** button to the right to select DEL VOICE.



3. All of the recorded file will be displayed by sequence. Switch the **Menu** button to the right or to the left to select **Y** to erase the file shown on the Display, or select **N** to skip to the next file, or select **EXIT** to leave the current screen.



Delete All Voice Files

1. Press down the **Menu** button once, and then push the **Menu** button to the right four times, and now you should read the message of DELETE FILE appearing on the Display.



2. Press down the **Menu** button once and then push the **Menu** button to the right twice to select DEL ALL VOICE.



3. Once you read DEL ALL VOICE on the screen, press down the **Menu** button, and then select **Y** to delete all voice files. Note that it may take several seconds to delete all the files.



Language Learning Function

This MP3/Storage Drive enables users to listen to a particular limited playback repeatedly during normal playback. With this function, users will be able to pay more concentration on the repeated playback and to achieve the result of learning language. To use this function, follow the instruction below:

1. During normal playback, find the starting point of the repeating playback that you wish to set, and press the **Fn** button once.
2. When you first press the **Fn** button, you will see the indication of **A-** appearing on the screen.



3. Then, find the terminal point of the repeating playback that you wish to set, and press the **Fn** button again.
4. When you press the **Fn** button the second time, you will see the indication of **A-B** appearing on the screen, and that means you have set the repeating playback successfully.



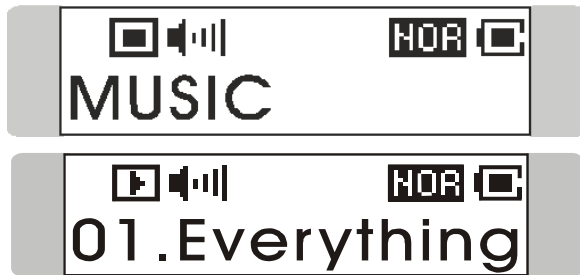
5. Once the indication of **A-B** appears on the screen, you will now hear the repeating playback that you set previously again and again.
6. To cancel the repeating playback and return to the normal playback, press the **Fn** button again, and the indication of **A-B** will disappear from the Display.

Menu Mode

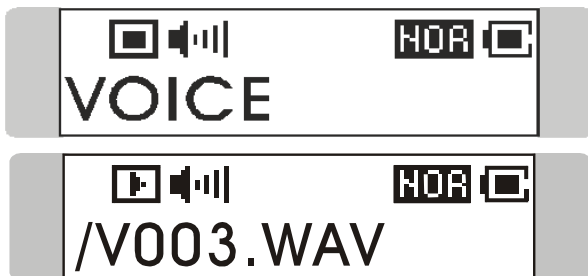
This MP3/Storage Drive provides a **Menu** switching button that includes most function designed for **Acer Multi-functional MP3/Storage Drive**. With this **Menu** switching button, in addition to switch between Music Playback, FM Radio or Recording mode, EQ setting or any other setting for the MP3/Storage Drive can be also adjusted quickly and easily.

Menu Table		
MUSIC		
VOICE		
FM RADIO		
SETTINGS	EQ	NORMAL / ROCK / JAZZ / CLASSICAL / POP
	REPEAT	NORMAL / REPEAT ONE / REPEAT ALL / SHUFFLE / SHUFFLE REP
	BACKLIGHT	DISABLE / 5 SECS / 10SECS / 30 SECS
	CONTRAST	Adjusting bar
	POWER OFF	DISABLE / 1 MIN / 2 MINS / 5 MINS / 10 MINS
	RECORD RATE	8000Hz / 11025Hz / 16000Hz / 22050Hz / 32000Hz / 44100Hz / 48000Hz
	RECORD SOURCE	MICROPHONE / LINE-IN
	LANGUAGE	ENGLISH / TRAD. CHINESE
	EXIT	
DELETE FILE	DEL MUSIC	Delete a Music file each time (.mps / .wav)
	DEL VOICE	Delete a Voice or FM radio recording file each time (.wav)
	DEL ALL MUSIC	Delete all Music file
	DEL ALL VOICE	Delete all Voice or FM radio recording files
	EXIT	
ABOUT		
RECORD		
EXIT		

1. Press down the **Menu** button once, and then push the **Menu** button to the right or to the left to select the desired function.
2. Select **MUSIC** by pressing down the **Menu** button once to enter music playback mode.



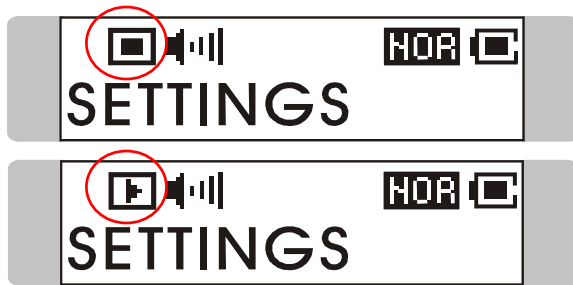
3. Select **VOICE** by pressing down the **Menu** button and press the **Menu** button the right once to enter voice playback mode.



4. Select **FM RADIO** by pressing down the **Menu** button to enter **FM** radio broadcasting mode.



5. Select **SETTINGS** by pressing down the **Menu** button to enter Setting mode. In Setting mode, you are able to make adjustment for various functions.



Note: Adjustment for all items under the menu of settings can be made during music playback or when music playback is stopped.

6. Select **DELETE FILE** by pressing down the **Menu** button to delete music or voice files.



7. Select **ABOUT** to read the information of this **Acer Multi-functional MP3/Storage Drive**.



8. Select **RECORD** to start recording through MIC or FM radio station.



9. Select EXIT to return to Music Playback mode.



Other Settings

Backlight

Under this Backlight setting, you are able to set a time to turn off the backlight of the LCD Display automatically.

1. Press down the **Menu** button once, and then push the **Menu** button to the right three times, and now you should read the message of SETTINGS appearing on the Display.



2. Press down the **Menu** button again, and then push the **Menu** button to the right twice to select BACKLIGHT. Once the message of BACKLIGHT appears on the screen, press down the **Menu** button again.



3. Now push the **Menu** button to the right or to the left to select a desired time to turn off the backlight of the LCD Display. If select DISABLE, and the backlight of the LCD Display will be turned off.



4. When a selection is decided, press down the **Menu** button once to confirm the selection.



Contrast

Under this Contrast setting, you are able to set the contrast of the LCD Display.

Under this Backlight setting, you are able to set a time to turn off the backlight of the LCD Display automatically.

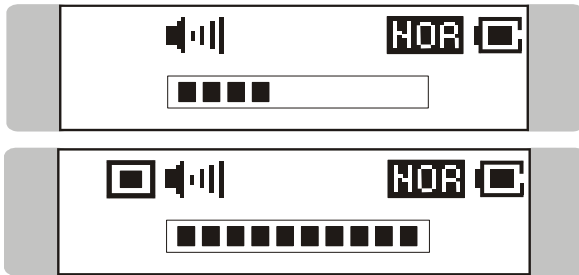
1. Press down the **Menu** button once, and then push the **Menu** button to the right three times, and now you should read the message of SETTINGS appearing on the Display.



2. Press down the **Menu** button again, and then push the **Menu** button to the right three times to select CONTRAST. Once the message of CONTRAST appears on the screen, press down the **Menu** button again.



- Now push the **Menu** button to the right or to the left to increase or decrease the Contrast value.



- When a selection is decided, press down the **Menu** button once to confirm the selection.



Power Off

Under this Power Off setting, you are able to set a time to turn off this MP3/Storage Drive automatically.

- Press down the **Menu** button once, and then push the **Menu** button to the right three times, and now you should read the message of SETTINGS appearing on the Display.



2. Press down the **Menu** button again, and then push the **Menu** button to the right four times to select POWER OFF. Once the message of POWER OFF appears on the screen, press down the **Menu** button again.



3. Now push the **Menu** button to the right or to the left to select a desired time to turn off this MP3/Storage Drive. If select DISABLE, and the power of this MP3/Storage Drive will always stay on.



4. When a selection is decided, press down the **Menu** button once to confirm the selection.



Record Rate

Under this Record Rate setting, you are able to set the Record Rate as your wish.

1. Press down the **Menu** button once, and then push the **Menu** button to the right three times, and now you should read the message of SETTINGS appearing on the Display.



2. Press down the **Menu** button again, and then push the **Menu** button to the left three times to select RECORD RATE. Once the message of RECORD RATE appears on the screen, press down the **Menu** button again.



3. Now push the **Menu** button to the right or to the left to select a proper Record Rate.



4. When a selection is decided, press down the **Menu** button once to confirm the selection.



Note: The record rate is only up to 22050Hz in FM recording.

Language

Under this Language setting, you are able to select the language of the interface as your wish.

1. Press down the **Menu** button once, and then push the **Menu** button to the right three times, and now you should read the message of SETTINGS appearing on the Display.



2. Press down the **Menu** button again, and then push the **Menu** button to the left twice to select LANGUAGE. Once the message of LANGUAGE appears on the screen, press down the **Menu** button again.



3. Now push the **Menu** button to the right or to the left to select a desired language.



4. When a selection is decided, press down the **Menu** button once to confirm the selection.



USB Flash Disk

This MP3/Storage Drive enables users to save personal data (files) in various formats to its memory. If you like, you can say that this MP3/Storage Drive works as another hard disk, but a portable, small and exquisite one. To save data into the memory of this MP3/Storage Drive, simply connect it to your computer, and use **Windows Explorer** to manage your data.

Appendix A. Specifications

Acer Multi-functional MP3/Storage Drive	
Target Dimension	95.7 (W) x 30(D) x 18.8(H) mm
Target Weight	33 g without battery , 41g with battery
Operation Temperature	0 °C ~ 45°C
Storage Temperature	-20°C ~ +70 °C
Audio Spec	Output: 60mW rms (30mW / channel) Frequency: 20 to 20K Hz SNR: >90dB
LCD module	Dimension: 29.5(L) x 11(W)mm (96 x 25 pixels)
Memory Size	256/512 MB
I/O Input	1. Stereo Audio- out, 3.5mm 2. Mono MIC - in, 3.5mm 3. USB connector
EMI and Safety	BSMI, FCC Class B and CE
Interface Language	English/ Traditional Chinese
Earphone with neck strap	Stereo Output: 20mW rms (10mW / Channel)
Battery	AAA-Alkaline 1280mA/hr
Manual	English/ Traditional Chinese
USB Cable	100 cm

